

GUIDELINES FOR ECO 2011 ASSIGNMENT

(DUE DATE IS JANUARY 04, 2024)

1. Find a research question that you want to evaluate with data. (**For example: Is economic growth related with technological development?**)
2. Choose 4 indicators to evaluate this research question. State why you have decided to choose these indicators. Briefly explain your choice. (**For example: GDP per capita, patents issued, R&D expenditures, property rights from Economic Freedom Index**)
3. Choose two countries to answer your research question and analyze them by comparing their indicators. (**For example: Turkey and Kiribati**)
4. Draw graphs using latest available data (2000 to 2023) in order to show the relation between your indicators.
5. You will evaluate and discuss the outcomes of the graphs that you have drawn by **using your own comments and sentences.**
6. You are required to prepare a paper of about 5 pages long (including your graphs and evaluations).

GLOBAL COMPETITIVENESS INDEX (WORLD ECONOMIC FORUM)

Years available: 2004-2020, Note that 2019 Report includes data of 2018

In 2020, World Economic Forum paused the long-standing Global Competitiveness Index rankings and instead dedicated special edition to elaborating on the priorities for recovery and revival and considered the building blocks of a transformation towards new economic systems that combine “productivity”, “people” and “planet” targets.

Data available at

(for 2007-2017) (Index ranges from 1 to 7)

<http://reports.weforum.org/global-competitiveness-index-2017-2018/downloads/>

(for 2018 & 2019) (Index ranges from 0 to 100)

<http://reports.weforum.org/global-competitiveness-report-2019/downloads/>

WORLDWIDE GOVERNANCE INDICATORS (WORLD BANK)

Years available: 1996-2022

Data available at

<https://info.worldbank.org/governance/wgi/>

<https://databank.worldbank.org/reports.aspx?source=worldwide-governance-indicators>

HUMAN DEVELOPMENT REPORT (UNITED NATIONS DEVELOPMENT PROGRAMME)

Years available: 1980-2022 (Index ranges from 0 to 1)

Data available at

Public data explorer <http://hdr.undp.org/en/data-explorer>

WORLD DEVELOPMENT INDICATORS (WORLD BANK)

Years available: 1960-2023

Data available at

<http://data.worldbank.org>

ATLAS OF ECONOMIC COMPLEXITY

Years available: 1995-2021

Data available at

<https://atlas.cid.harvard.edu/data-downloads>

<https://atlas.cid.harvard.edu/countries/39>

INDEX OF ECONOMIC FREEDOM (THE HERITAGE FOUNDATION)

Years available: 1995-2023

Data available at

<https://www.heritage.org/index/download>

THE FORMAT OF ASSIGNMENT

TITLE

INTRODUCTION

1. What is the aim of this study? **(State your research question)**
2. What are the indicators that you use? Briefly explain details of your indicators and why you choose them. **(Hint: Each group of statistics from different sources evaluates a specific and a different topic.)**

DESCRIPTIVE ANALYSIS

1. Draw each graph.
2. What is the economic interpretation of these graphs?

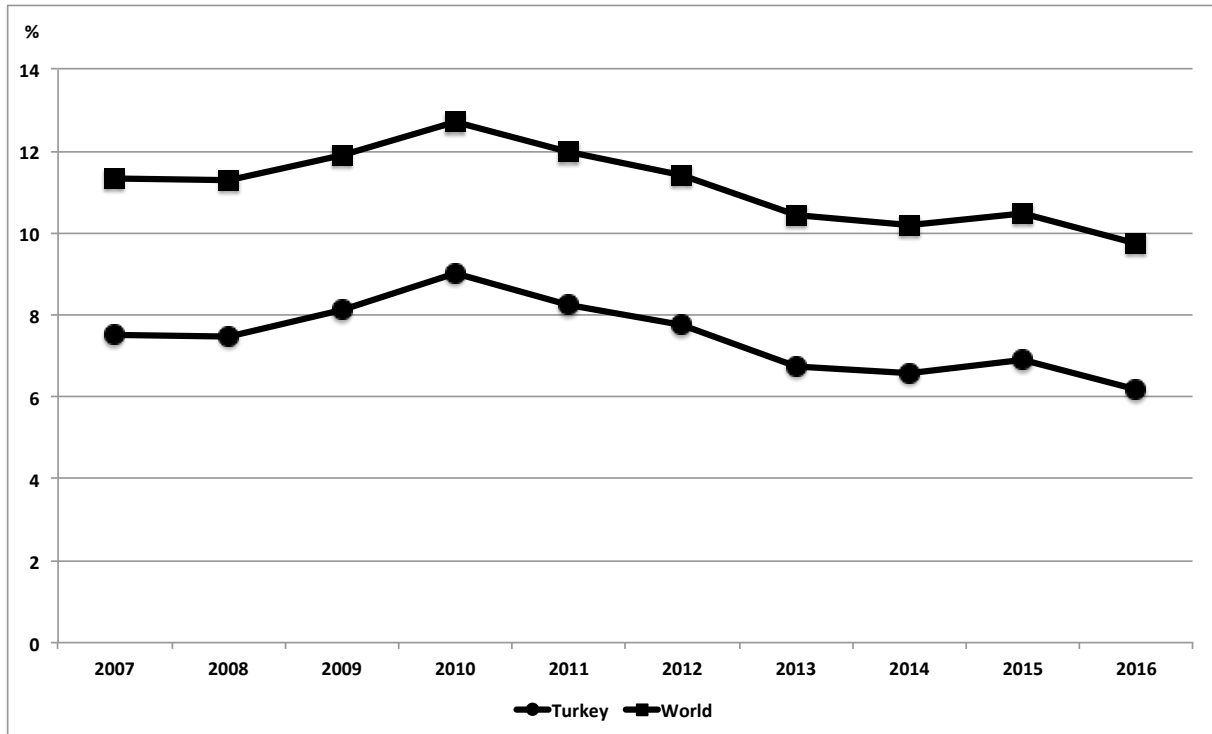
CONCLUSION

1. Briefly explain what you have found out in your descriptive analysis.
2. What is the possible policy implication that you can propose using your graphs?

REFERENCES

1. List all of the Databases used.
2. List additional references (if any) that you use throughout the paper.

EXAMPLE: Graph 1. Agriculture, forestry, and fishing, value added (% of GDP)



Source: World Development Indicators (2018)