

Computer Vision Internship Assignment

Time - 2 days

1. You have images and corresponding labels in YOLO format (segmentation data) dataset drive link is given below.

Now using the labels file draw the annotations on corresponding image only for class having banana and apple their class id you can find in data.yaml file (use entire test folder)

Also give the count of images in which apples and bananas were found in the entire test folder.

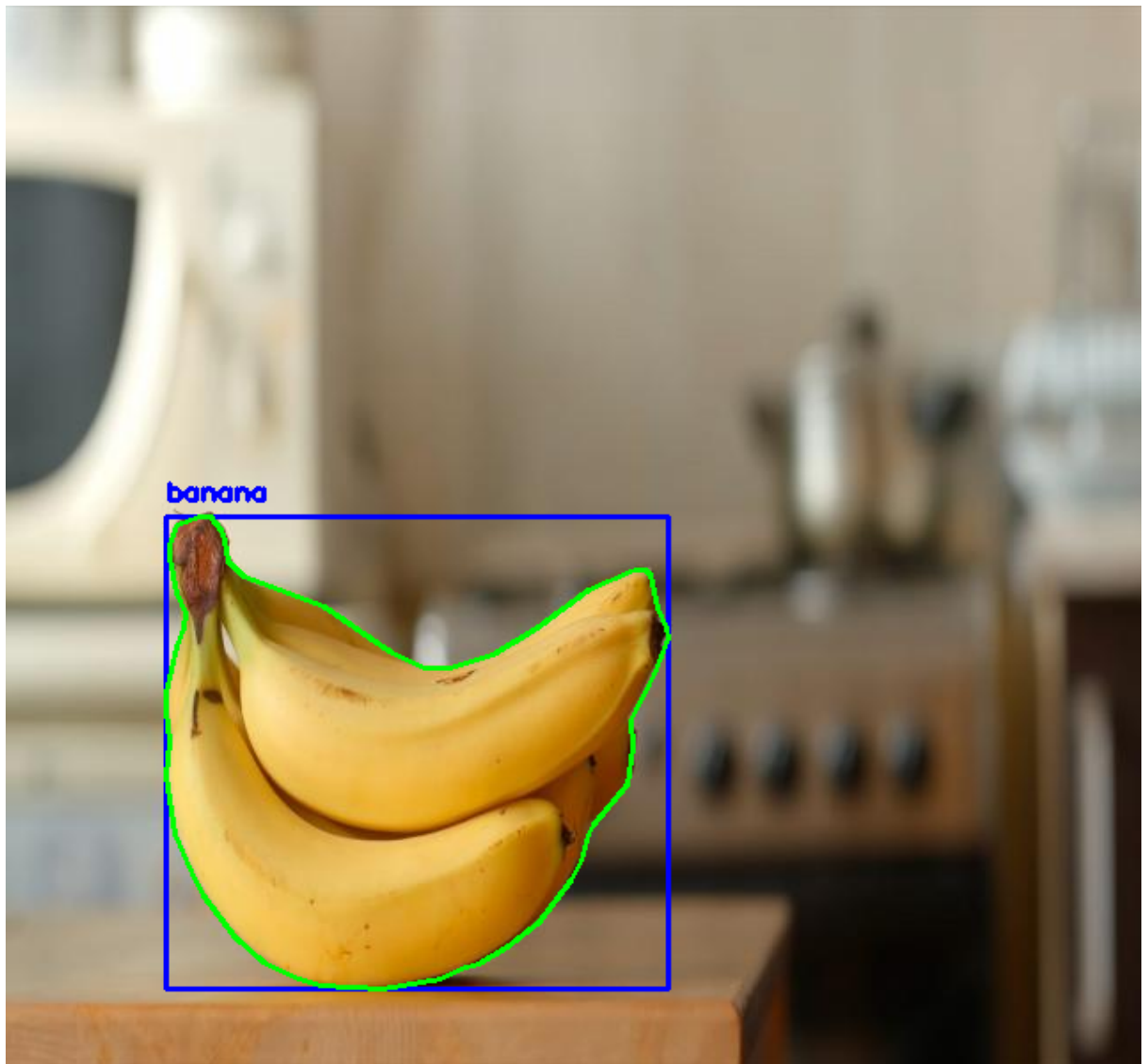
Write the python code step by step for the same

The annotations should look similar to below sample image annotation color may vary.

Also explain how to annotate objects in an image (any tools or ideas to annotate for object detection and segmentation)

(output should contain the annotated images for class apple , banana and

their corresponding total count)



Dataset -

https://drive.google.com/file/d/1EUNta7oBtbs6-zd5SJAun26uUwwF5by_/view?usp=sharing

2. In the above given dataset inside the test folder there is an image folder. Total no of images is 41 in that folder **apply different kinds of image augmentation technique to increase the dataset** .
(after augmentation the count of total images should be 80-100)

Explain each augmentation technique what it does and why you have selected that particular technique.