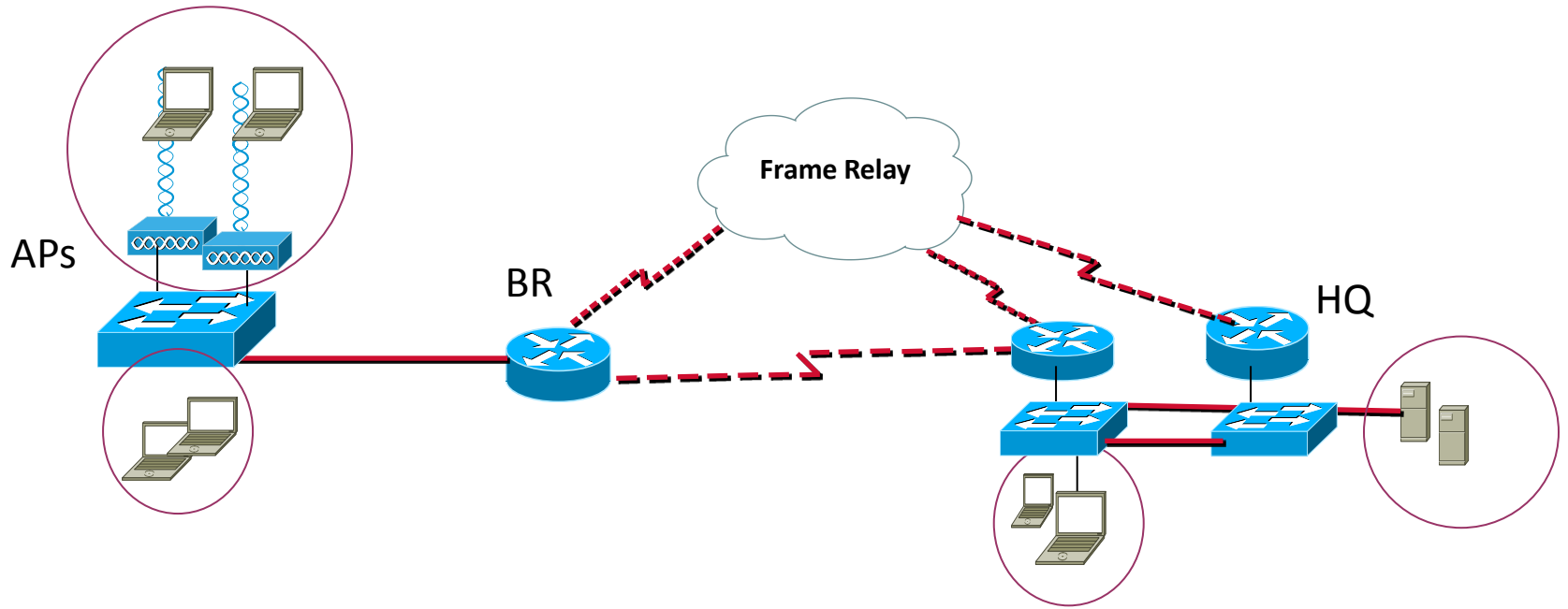


COMP2105 Project B

Project B



Project B Major Tasks

Design Tasks:

1. Create Valid IP Address scheme and update logical network map (by MS Visio)

Private domain major network number 192.168.1.0/24, server group 10 hosts, user group 50 hosts.

2. Choose the right systems to set up test bed.

Project B Implementation Tasks

1. Switch port security, AP security features.
2. VLANs creation on switch (wireless VLAN with APs in hot-standby group and Server VLAN), inter-VLAN routing and RSTP-PVST.
3. Redundant gateway service by HSRP, VRRP or GBLP.
4. Set Frame Relay link as a backup of dedicated line.
5. Establish IP domain by OSPF (with authentication)
6. Setup Windows AD/HTTP/DNS/Exchange services on the server by using VMs.

Project B Analysis Tasks

1. AP hot standby, STP, OSPF, HSRP High Availability and Failover Times
2. OSPF over Frame Relay options and applications
3. WAN link backup options and tradeoffs
4. IP SLAs for wide area networks (WANs) that connect multiple geographies and need to be monitored from one central location