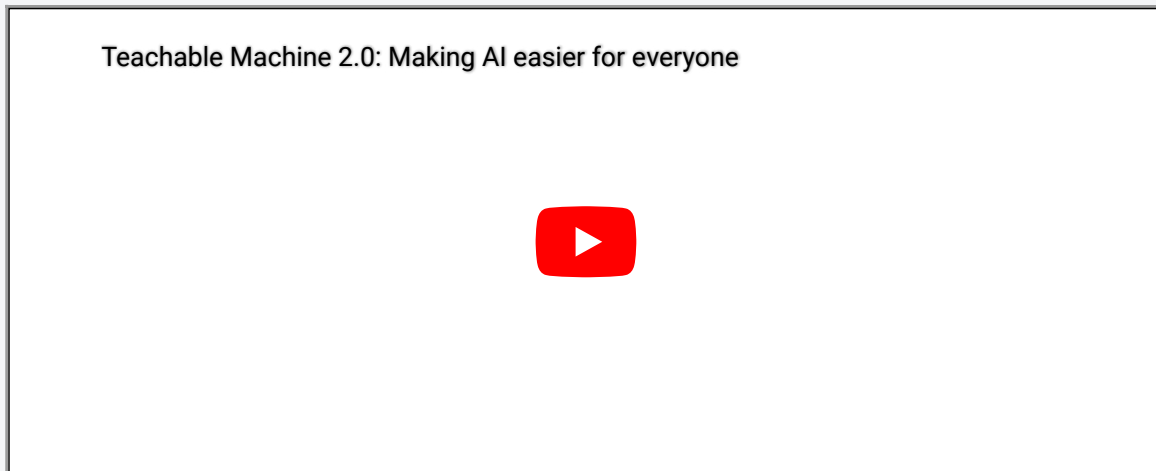


Teachable Machine Learning

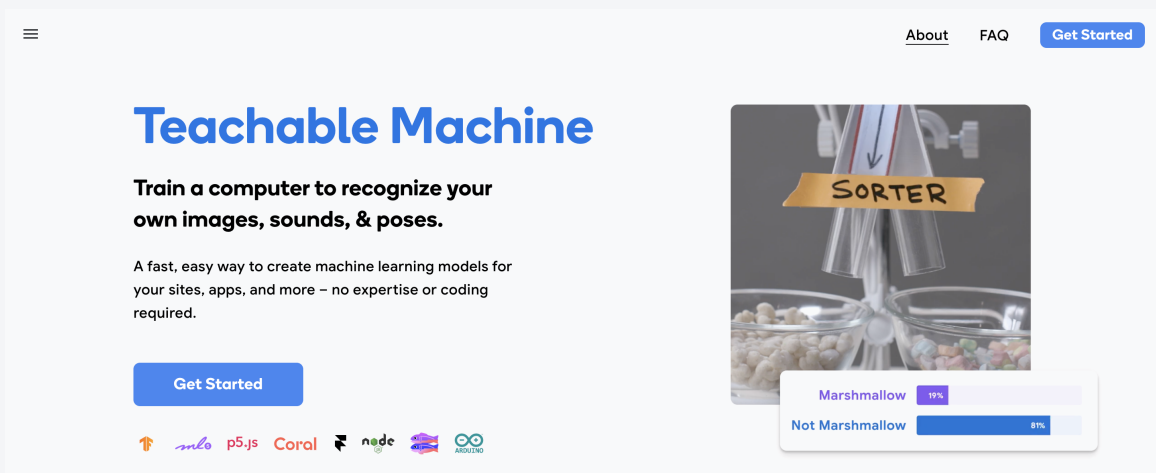
This part of the project is for 50 marks.

Through this part of the project, you will be creating a machine learning without the use of code on the [teachablemachine](#) platform, a google initiative.

Let us learn more about it in the video below.



So, on this platform, as you open it, you will be directed to the following page.



Teachablemachine 1

Once, you click on *Get Started*, you will be redirected to the page below.

New Project

Open an existing project from Drive.

Open an existing project from a file.

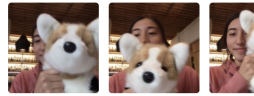
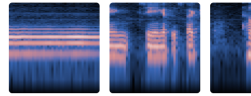


Image Project

Teach based on images, from files or your webcam.



Audio Project

Teach based on one-second-long sounds, from files or your microphone.



Pose Project

Teach based on images, from files or your webcam.

Teachablemachine 2

From the three options, click on any one that suits you the best to make the model. On clicking, you will reach the page below.

Teachable Machine

The interface shows two classes, Class 1 and Class 2, each with 'Add Pose Samples' buttons for 'Webcam' and 'Upload'. A 'Training' section contains a 'Train Model' button and a dropdown menu set to 'Advanced'. A 'Preview' section contains an 'Export Model' button and a message: 'You must train a model on the left before you can preview it here.' At the bottom, there is a dashed box with an 'Add a class' button.

Teachablemachine 3

From here, you can start building your model. It is very easy to build a model, as all the information is already provided on the page, as well as in many videos across You Tube.

Some of these videos have been provided below.

[Video 1 - Gather](#)

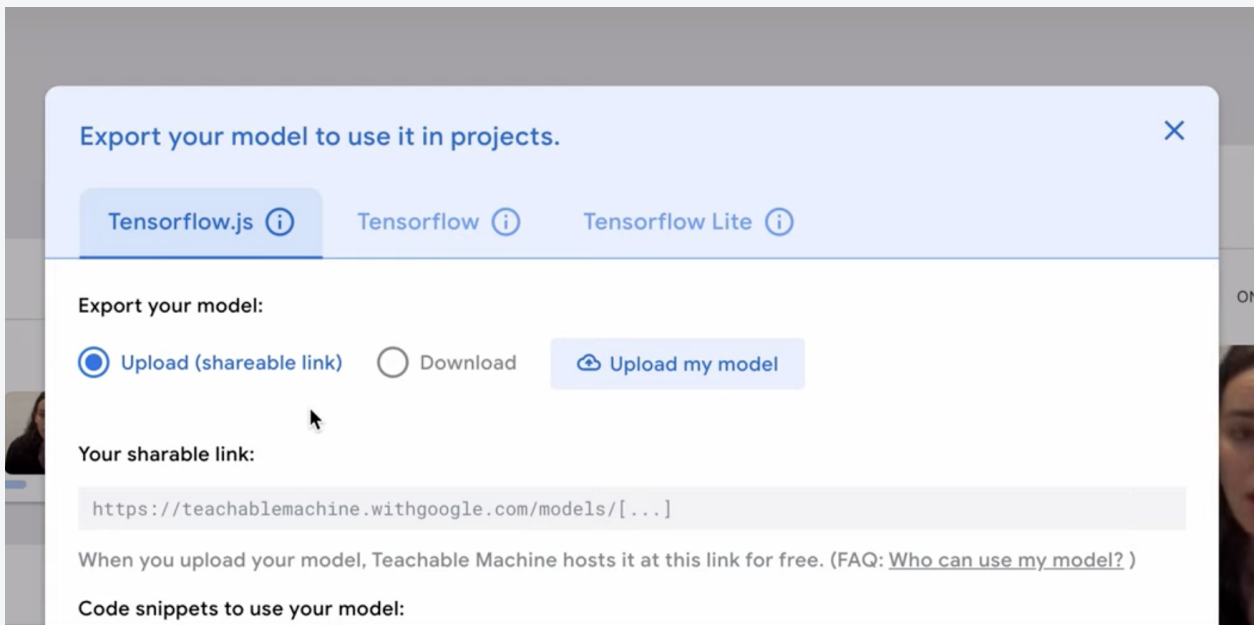
[Video 2 - Train](#)

[Video 3 - Export](#)

Once you have created your model, you can export it using the link on the preview page.

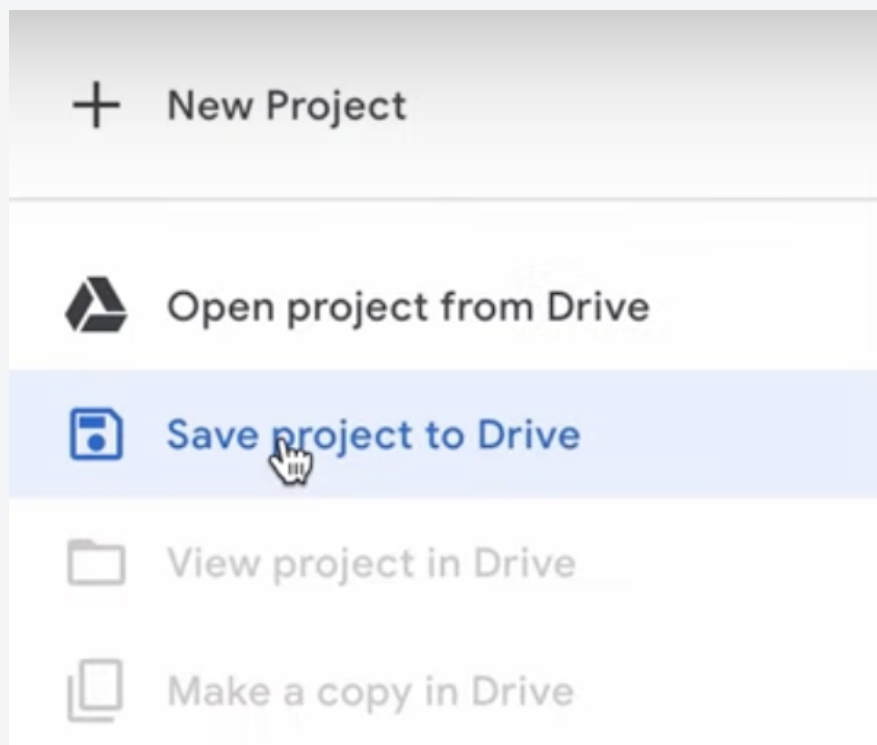
Once you have created your model, you can export it using the link on the preview page.


As shown in the image below, click on the **upload model** button and you will get a sharable link.



Upload Model

Once, you have received the please save the entire project on the drive as well, as shown in the image below.



 Open project from file Download project as file

Save on Drive

Both of these links are your submission for this part of the project, along with a small paragraph of text explaining your project and how its applications.

Your submission will be rated in the following parameters. Please read through these in detail.

- **Description of the model you have created - 10 marks** - You need to write about the model and its use in 100-200 words about what the model does. (*For example, it could be a model to identify what genre of music is being played, identify how many fingers is someone holding up, identify when a person is using a phone and when are they not, etc.*) These applications can then be paired up using coding to various other applications. However, that is not a part of your project.

(You are to simply create a model using teachable and write how your model can be used)

- **Innovativeness of the model - 20 marks** - This refers to how ingenious is the model and the use case for it
- **Accuracy of the final model - 20 marks** - This refers to how well is the model able to perform

You can refer to the [FAQ](#) link for teachable in case you face any difficulties.

Let us now move on to the second part of the project.

 [Report an error](#)

PREVIOUS

Project Introduction

NEXT

AI and ML Applications

